

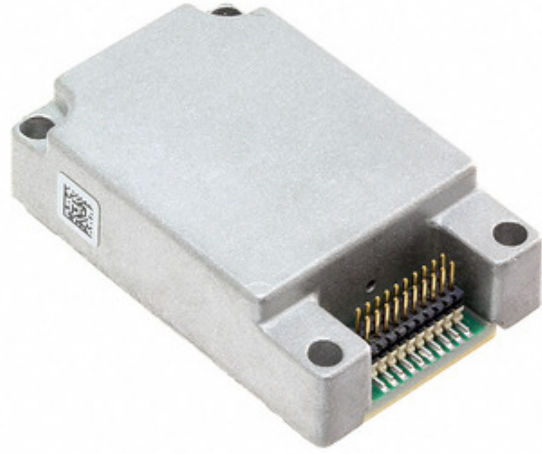


ADI (Analog Devices, Inc.)

ADIS16448BMLZ

Gawo la Nambala:
Wopanga / Chinthu:
Mafotokozedwe Akatundu
Datasheets:
Mkhalidwe wa RoHS
Zolemba
Chombo Chochokera
Njira Yoperekerana

ADIS16448BMLZ
ADI (Analog Devices, Inc.)
MODULE GYRO/ACCELEROMETER 20MSM
 ADIS16448BMLZ.pdf
 Ili ndi zoyenera kutsogolo / RoHS
142 pcs stock
Hong Kong
DHL/Fedex/TNT/UPS/EMS



Chithunzi chingakhale choyimira. Onani ndondomeko zogwiritsira ntchito mankhwala.

PEMPHO LA QUOTATION

Mafotokozedwe a ADIS16448BMLZ

GAWO LA NAMBALA	ADIS16448BMLZ
WOPANGA	ADI (Analog Devices, Inc.)
KUFOTOKOZERA	MODULE GYRO/ACCELEROMETER 20MSM
MKHALIDWE WOPANDA UFULU / MKHALIDWE WA ROHS	Ili ndi zoyenera kutsogolo / RoHS
CHIWERENGERO CHIPEZEKA	142 pcs
TSAMBA LAZAMBIRI	ADIS16448BMLZ.pdf
PHUKUSI LA CHIPANGIZO CHOTHANDIZIRA	Module
MNDANDANDA	-
MTUNDU WA SENSOR	Gyroscope
KUPAKA	Tray
PHUKUSI / MLANDUWU	Module
MTUNDU WOTSATSA	SPI
KUTENTHA KWAMBIRI	-40°C ~ 85°C
MTUNDU WOKWERA	Chassis Mount
MPHUNO YOPANDA CHISOKONEZO (MSL)	1 (Unlimited)
MKHALIDWE WOPANDA UFULU / MKHALIDWE WA ROHS	Contains lead / RoHS Compliant
KUFOTOKOZEDWA KWAMBIRI	Gyroscope Sensor SPI Output
CHIGAWO CHOYAMBIRA	ADIS16448

Matanthauzo okhudzana

ADI (Analog Devices, Inc.) ADIS16448BMLZ	AAAA Distributor	ADIS16448BMLZ Wopereka
ADIS16448BMLZ Mtengo	ADIS16448BMLZ Zithunzi	ADIS16448BMLZ Image
ADIS16448BMLZ PDF Datasheet	ADIS16448BMLZ Dinani Datasheet	ADIS16448BMLZ Datasheet
ADIS16448BMLZ Stock	Gulani ADIS16448BMLZ	Gulani ADI (Analog Devices, Inc.) ADIS16448BMLZ
ADI (Analog Devices, Inc.) ADIS16448BMLZ	ADI (Analog Devices, Inc.) Wogulitsa	ADI (Analog Devices, Inc.) Distributor
ADI (Analog Devices, Inc.) ADIS16448BMLZ	AD ADIS16448BMLZ	ADI (Analog Devices, Inc.) ADIS16448BMLZ
Analog Devices Inc. ADIS16448BMLZ	Analog Devices, Inc. ADIS16448BMLZ	

Zogwirizana

<p>ADIS1644X/FLEX Opanga: ADI (Analog Devices, Inc.) Kufotokozera: FLEXIBLE INTERFACE CABLE IMU Zilipo: 4031 pcs</p> <p>RFQ</p>	<p>ADIS16407BMLZ Opanga: ADI (Analog Devices, Inc.) Kufotokozera: IMU ACCEL/BAR/GYRO/MAG SPI 24ML Zilipo: 150 pcs</p> <p>RFQ</p>
<p>ADIS16448BMLZ-P Opanga: ADI (Analog Devices, Inc.) Kufotokozera: TACT GRDE 10 DEG FREEDOM IMU Zilipo: 129 pcs</p> <p>RFQ</p>	<p>ADIS16460AMLZ Opanga: ADI (Analog Devices, Inc.) Kufotokozera: IMU ACCEL/GYRO/TEMP SPI 24ML Zilipo: 310 pcs</p> <p>RFQ</p>
<p>ADIS16465-2BMLZ Opanga: ADI (Analog Devices, Inc.) Kufotokozera: 6 DOF PREC IMU, 8G (500 DPS DNR) Zilipo: 157 pcs</p> <p>RFQ</p>	<p>ADIS16445/PCBZ Opanga: ADI (Analog Devices, Inc.) Kufotokozera: BOARD EVAL ADIS16445 Zilipo: 5414 pcs</p> <p>RFQ</p>
<p>ADIS16445AMLZ Opanga: ADI (Analog Devices, Inc.) Kufotokozera: IMU ACCEL/GYRO 3-AXIS SPI 20ML Zilipo: 5317 pcs</p> <p>RFQ</p>	<p>ADIS16407/PCBZ Opanga: ADI (Analog Devices, Inc.) Kufotokozera: BOARD EVAL ADIS16407 Zilipo: 4940 pcs</p> <p>RFQ</p>
<p>ADIS16445BMLZ Opanga: ADI (Analog Devices, Inc.) Kufotokozera: IMU ACCEL/GYRO 3-AXIS SPI 20ML Zilipo: 183 pcs</p> <p>RFQ</p>	<p>ADIS16465-1BMLZ Opanga: ADI (Analog Devices, Inc.) Kufotokozera: 6 DOF PREC IMU, 8G (125 DPS DNR) Zilipo: 170 pcs</p> <p>RFQ</p>
<p>ADIS16465-3BMLZ Opanga: ADI (Analog Devices, Inc.) Kufotokozera: 6 DOF PREC IMU, 8G (2000 DPS DNR) Zilipo: 131 pcs</p> <p>RFQ</p>	<p>ADIS16448/PCBZ Opanga: ADI (Analog Devices, Inc.) Kufotokozera: BOARD BREAKOUT FOR ADIS16448 Zilipo: 7069 pcs</p> <p>RFQ</p>

