

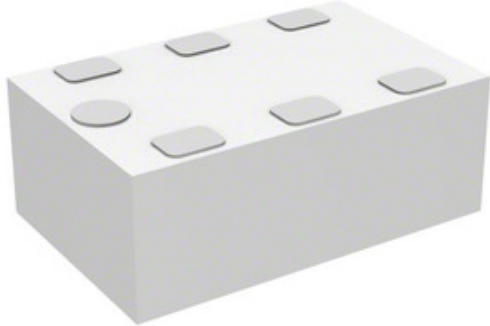


Anaren

DC1722J5020AHF

Gawo la Nambala:
 Wopanga / Chinthu:
 Mafotokozedwe Akatundu
 Datasheets:
 Mkhaliidwe wa RoHS
 Zolemba
 Chombo Chochokera
 Njira Yoperekerana

DC1722J5020AHF
 Anaren
 RF DIR COUPLER 1.7-2.2GHZ 0805
 DC1722J5020AHF.pdf
 Kutsogolera / RoHS Kumvera
 93367 pcs stock
 Hong Kong
 DHL/Fedex/TNT/UPS/EMS



PEMPHO LA QUOTATION

Chithunzi chingakhale choyimira. Onani ndondomeko zogwiritsira ntchito mankhwala.

Maforokozedwe a DC1722J5020AHF

GAWO LA NAMBALA	DC1722J5020AHF
WOPANGA	Anaren
KUFOTOKOZERA	RF DIR COUPLER 1.7-2.2GHZ 0805
MKHALIDWE WOPANDA UFULU / MKHALIDWE WA ROHS	Kutsogolera / RoHS Kumvera
CHIWERENGERO CHIPEZEKA	93367 pcs
TSAMBA LAZAMBIRI	DC1722J5020AHF.pdf
PHUKUSI LA CHIPANGIZO CHOTHANDIZIRA	0805 (2012 Metric)
MNDANDANDA	Xinger®
BWERERANI KUTAYIKA	22.5dB
MPHAMVU - MAX	2W
KUPAKA	Cut Tape (CT)
PHUKUSI / MLANDUWU	0805 (2012 Metric)
MAINA ENA	1173-1088-1
MPHUNO YOPANDA CHISOKONEZO (MSL)	1 (Unlimited)
MKHALIDWE WOPANDA UFULU / MKHALIDWE WA ROHS	Lead free / RoHS Compliant
KUSUNGULUMWA	-
KULOWETSA KULOWA	0.17dB
KUSINTHASINTHA	1.7GHz ~ 2.2GHz
KUFOTOKOZEDWA KWAMBIRI	RF Directional Coupler General Purpose 1.7GHz ~ 2.2GHz 19.9dB 2W 0805 (2012 Metric)
CHOLINGA CHOPHATIKIZANA	19.9dB
MTUNDU WOTSALIRA	Standard
MAPULOGALAMU	General Purpose

Matanthauzo okhudzana

Anaren DC1722J5020AHF	AAAA Distributor	DC1722J5020AHF Wopereka
DC1722J5020AHF Mtengo	DC1722J5020AHF Zithunzi	DC1722J5020AHF Image
DC1722J5020AHF PDF Datasheet	DC1722J5020AHF Dinani Datasheet	DC1722J5020AHF Datasheet
DC1722J5020AHF Stock	Gulani DC1722J5020AHF	Gulani Anaren DC1722J5020AHF
Anaren DC1722J5020AHF	Anaren Wogulitsa	Anaren Distributor
Anaren DC1722J5020AHF		

Zogwirizana

<p>DC1721B-B Opanga: ADI (Analog Devices, Inc.) Kufotokozera: BOARD EVAL FOR LTC4000 Zilipo: 423 pcs RFQ</p>	<p>DC1722J5015AHF Opanga: Anaren Kufotokozera: RF DIR COUPLER 1.7-2.2GHZ 0805 Zilipo: 112414 pcs RFQ</p>
<p>DC1724A Opanga: ADI (Analog Devices, Inc.) Kufotokozera: BOARD EVAL LTM8029 Zilipo: 1431 pcs RFQ</p>	<p>DC1722J5010AHF Opanga: Anaren Kufotokozera: RF DIR COUPLER 1.7-2.2GHZ 0805 Zilipo: 224478 pcs RFQ</p>
<p>DC1722J5005AHF Opanga: Anaren Kufotokozera: RF DIR COUPLER 1.7-2.2GHZ 0805 Zilipo: 109627 pcs RFQ</p>	<p>DC1723A Opanga: ADI (Analog Devices, Inc.) Kufotokozera: EVAL BOARD FOR LTM8050 Zilipo: 1589 pcs RFQ</p>
<p>DC1722A Opanga: ADI (Analog Devices, Inc.) Kufotokozera: EVAL BOARD BUCK REG LTC3864 Zilipo: 938 pcs RFQ</p>	<p>DC1721A Opanga: ADI (Analog Devices, Inc.) Kufotokozera: BRD DEMO LTC4000EGN/LTC3789EGN Zilipo: 353 pcs RFQ</p>
<p>DC1725A Opanga: ADI (Analog Devices, Inc.) Kufotokozera: EVAL BOARD BUCK REG LT3759 Zilipo: 650 pcs RFQ</p>	<p>DC1729A Opanga: ADI (Analog Devices, Inc.) Kufotokozera: BOARD EVAL FOR LT3086 Zilipo: 533 pcs RFQ</p>
<p>DC1728A Opanga: ADI (Analog Devices, Inc.) Kufotokozera: BOARD DEMO FOR LT3015 Zilipo: 621 pcs RFQ</p>	<p>DC1727A Opanga: ADI (Analog Devices, Inc.) Kufotokozera: BOARD DEMO FOR LT3641EFE Zilipo: 625 pcs RFQ</p>

