

View on mating side

o	C	C	C	C	C	C	C	C	C	C	C	C	C	C	C	C	C	C	C	C
o	B	B	B	B	B	B	B	B	B	B	B	B	B	B	B	B	B			
o	A	A	A	A	A	A	A	A	A	A	A	A	A	A	A	A	A			

MOLEX CAD/CAM PROJECT NAME: 86505208\_s81

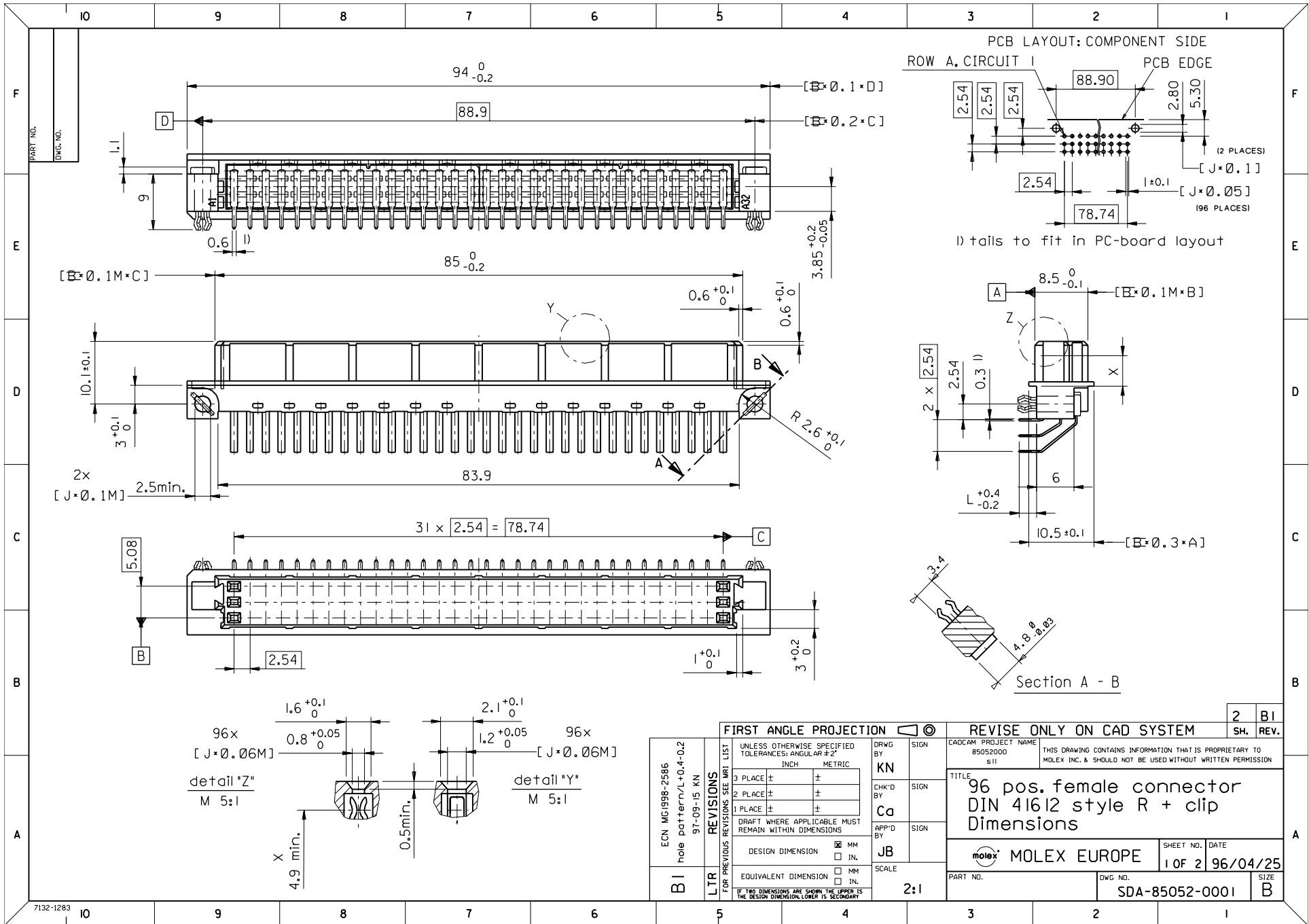
- A = 25 contacts L=2,8
- B = 21 contacts L=2,8
- C = 25 contacts L=2,8

S = 71 total number of contacts

Marking	Standard
Performance level	G2/0 = Contact area level2 / Termination tin
Flux proof	no
Fixing clip	no
Dimensions	SDA-85052-0001 sht.1
Technical Data	PS-85052-0001

C	G2/0	c1,2,6,7,11,12,14-32
B	G2/0	b3,4,8,9,16-32
A	G2/0	a1,2,5,6,10,11,13,14,16-32
Contact symbol	Perform. level	Contact position number

ECN MG1998-2665	REVISE ONLY ON CAD SYSTEM		SH. REV.
	CAD/CAM PROJECT NAME 86505208_s81	THIS DRAWING CONTAINS PROPRIETARY TO MOLEX INC. & SHOULD NOT BE USED WITHOUT WRITTEN PERMISSION	
UNLESS OTHERWISE SPECIFIED TOLERANCES: ANGULAR ±2° INCH METRIC		TITLE	
3 PLACE ± .	DRWG BY KN	96 pos. female connector	
2 PLACE ± .	CHK'D BY Ca	acc. DIN 41612 style R	
1 PLACE ± .	APPD BY JB	contacts arrangement	
DRAFT WHERE APPLICABLE MUST REMAIN WITHIN DIMENSIONS	SCALE	SHEET NO. DATE	
DESIGN DIMENSION <input type="checkbox"/> MM <input type="checkbox"/> IN.		1 OF 1 97/12/09	
EQUIVALENT DIMENSION <input type="checkbox"/> MM <input type="checkbox"/> IN.		PART NO. DWG NO. SIZE	
IF TWO DIMENSIONS ARE SHOWN, THE UPPER IS THE DESIGN DIMENSION, LOWER IS SECONDARY		SD-85052-0880 A	



ECN MG1998-2586 hole pattern/L+0.4-0.2 97-09-15 KN	LTR REVISIONS FOR PREVIOUS REVISIONS SEE MRL LIST	FIRST ANGLE PROJECTION		REVISE ONLY ON CAD SYSTEM		2	BI
		UNLESS OTHERWISE SPECIFIED TOLERANCES: ANGULAR ±2° INCH METRIC	DRWG BY KN	CAD/CAM PROJECT NAME 85052000 611	THIS DRAWING CONTAINS INFORMATION THAT IS PROPRIETARY TO MOLEX INC. & SHOULD NOT BE USED WITHOUT WRITTEN PERMISSION		SH.
3 PLACE ± ±		CHK'D BY Ca	SIGN	TITLE 96 pos. female connector DIN 41612 style R + clip Dimensions			
2 PLACE ± ±		APP'D BY JB	SIGN	MOLEX EUROPE		SHEET NO. DATE 1 OF 2 96/04/25	
1 PLACE ± ±		SCALE 2:1		PART NO.		DWG NO. SDA-85052-0001	
DRAFT WHERE APPLICABLE MUST REMAIN WITHIN DIMENSIONS				SIZE B			
DESIGN DIMENSION	<input checked="" type="checkbox"/> MM						
	<input type="checkbox"/> IN.						
EQUIVALENT DIMENSION	<input type="checkbox"/> MM						
	<input type="checkbox"/> IN.						
IF TWO DIMENSIONS ARE SHOWN THE UPPER IS THE DESIGN DIMENSION, LOWER IS SECONDARY							